

# Population futures in an uncertain world: The changing faces of Aotearoa New Zealand

## New Zealand's Population Conference 2023

29 and 30 August 2023, Engineering Building, University of Auckland

Organised by the Population Association of New Zealand

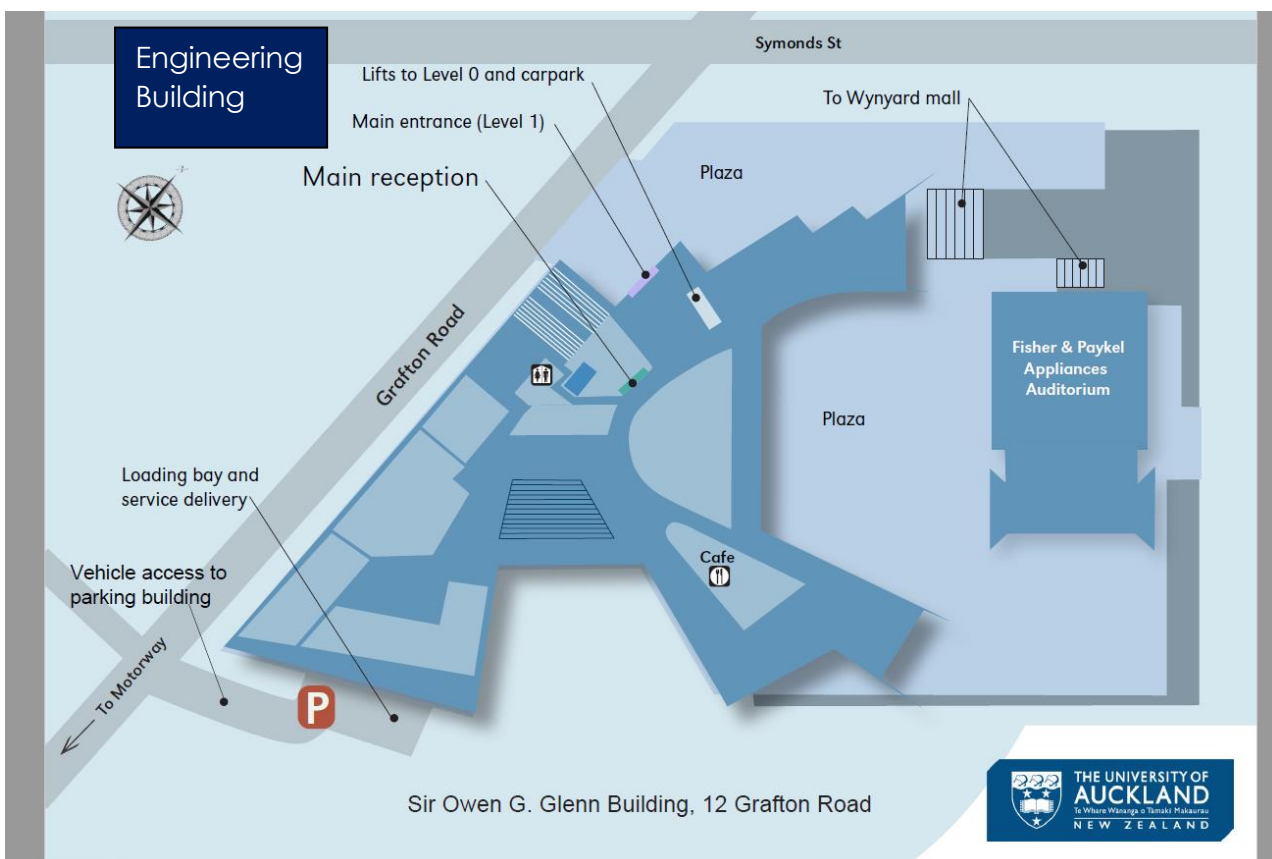


### Car Parking

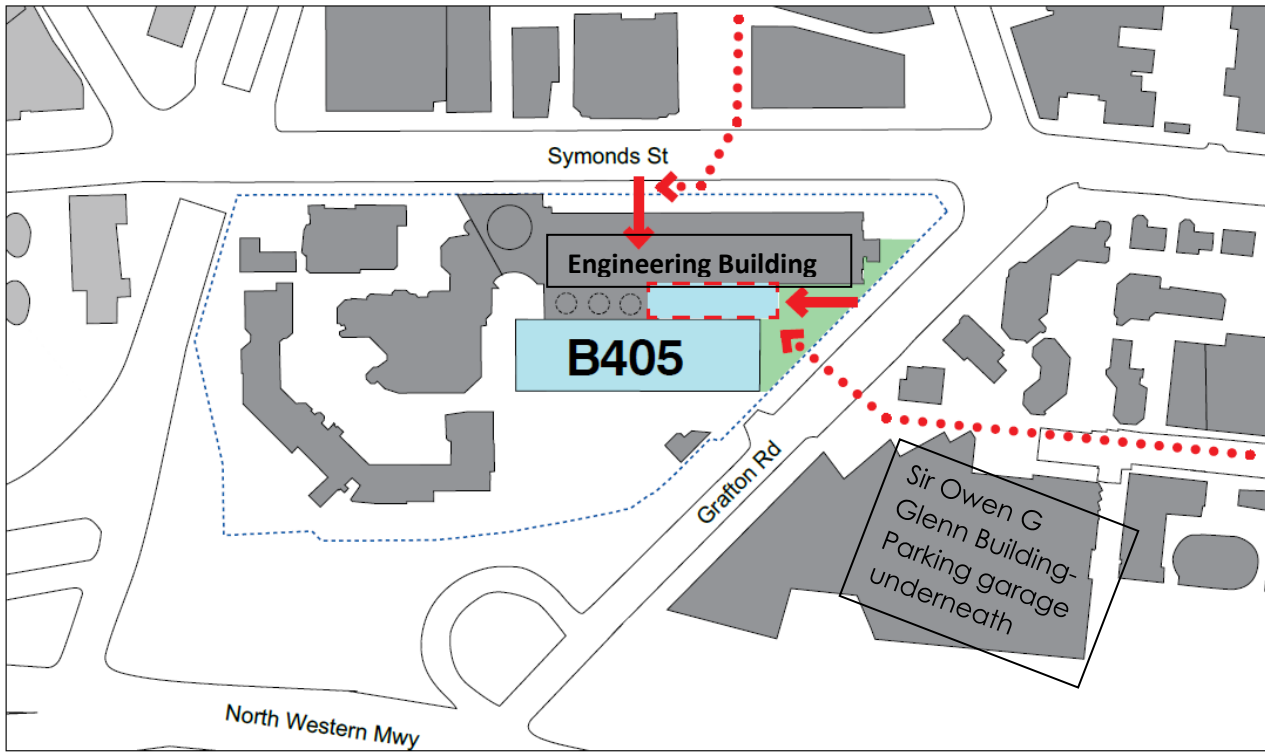
Car Parking at the Faculty of Engineering is very restricted, as is on-street parking. The closest carparking is at the OGGB Building.

There are five levels of car parking (over 1,000 spaces) at OGGB. This is the main car park on the University of Auckland's City Campus. You can access the car park via Grafton Road, opposite Stanley Street.

Parking Option	Cost	Hours	Days
Casual hourly parking	\$5 an hour	6.30am to 5.00pm	Monday to Friday
	\$25 for more than 5 hours	6.30am to 5.00pm	Monday to Friday
	\$6 flat rate	After 5.00pm	Daily
Casual daily parking	\$6 flat rate	7.00am to 11.00pm	Saturday & Sunday



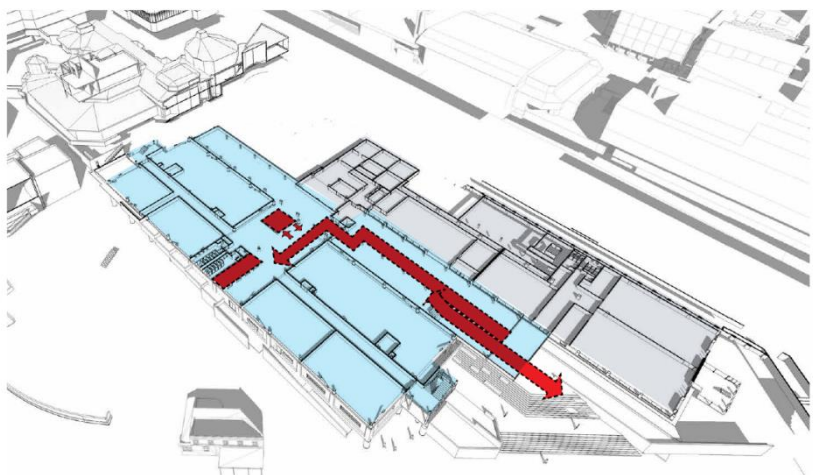
# Site & Context



Grafton Road Entry / Level 2



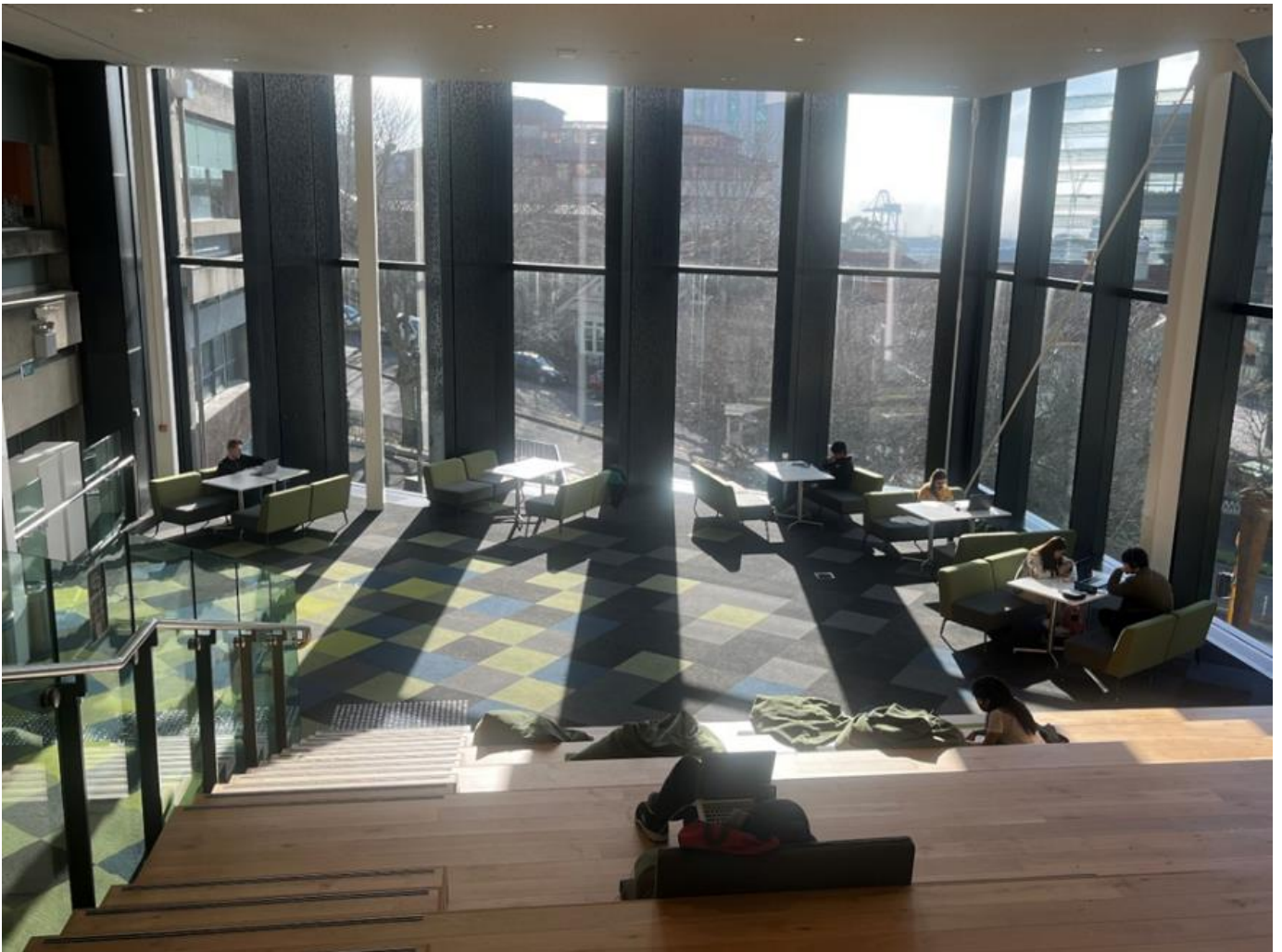
Level 2



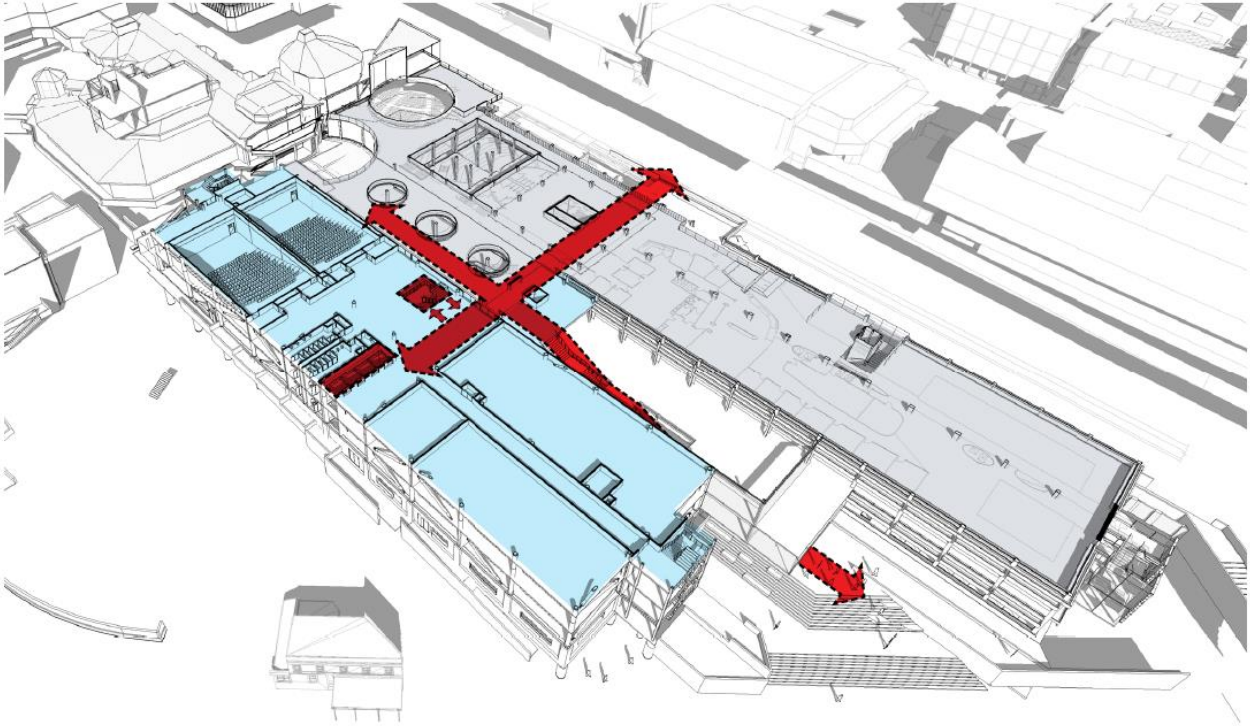
## Level 4 / North South Axis and through link



## Level 4 down to level 3 of the terraces (405-488 & 405-389)



## Level 4



## Level 4

